



MADE IN GERMANY



starreda.hk | Q

25 Tai Yau Street, San Po Kong, Kowloon, Hong Kong

852 2320 6261 • 852 3798 8788

852 2351 6259

redaexpt@starred-a.com



MADE IN GERMANY





### ■ DURABILITY 耐久力

High energy absorption with low weight  
吸收衝擊力強

High resilience following static and dynamic loading  
彈性高

Negligible water absorption  
吸水性極低

### ■ HIGH THERMAL STABILITY 熱穩定性高

From -40°C up to max. +120°C  
可承受 -40°C 到 +120°C

Functions reliable over a wide range of temperature  
在能承受的溫度範圍內可靠運行

Good heat insulating properties  
良好的隔熱性能

### ■ ISOTROPIC DEFORMATION PERFORMANCE 不易變形 · 耐衝力強

Isotropic deformation performance independent of the direction of impact  
能抵禦來自不同方向的衝擊力而不變形

Essentially unchanged energy absorption after repeated impact load  
衝擊多次也不影響其耐久力之功能

Moulding density adjustable to meet specific requirements  
密度可根據特定的要求調控

### ■ LIGHTWEIGHT 輕量級

Low weight of EPP material  
重量輕的EPP材料

### ■ HYGIENE 衛生

Recommended according to EU 1935/2004  
符合歐盟1935/2004

Good resistance to chemicals and oils  
對化學品和油性有良好的隔絕

Odourless and detergent resistant  
無味和耐洗

Dishwasher-proof  
可用於洗碗碟機

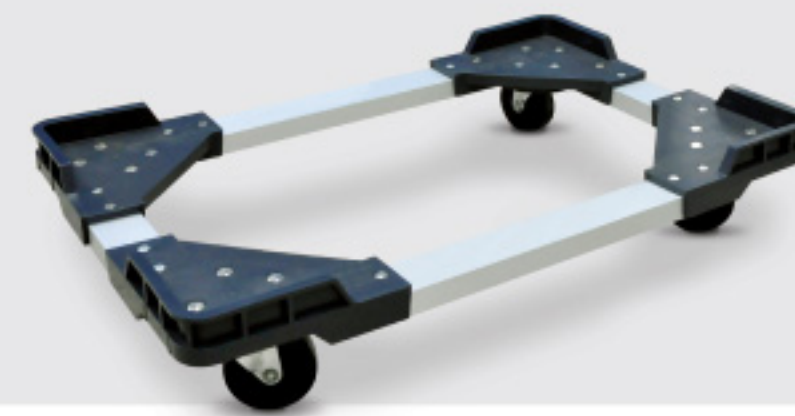
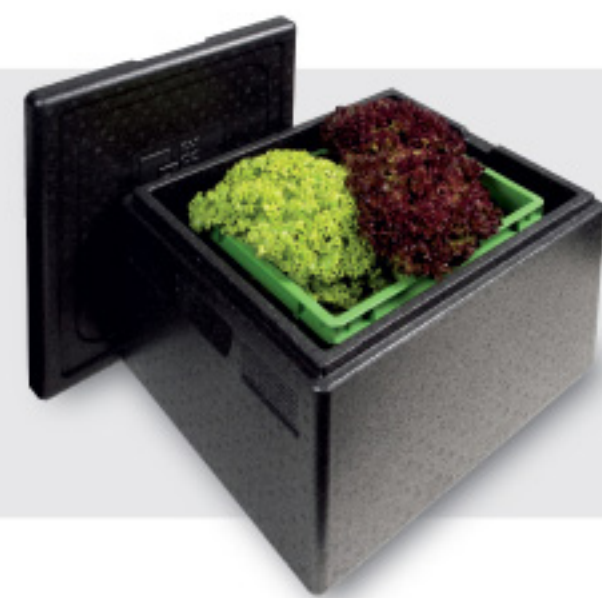
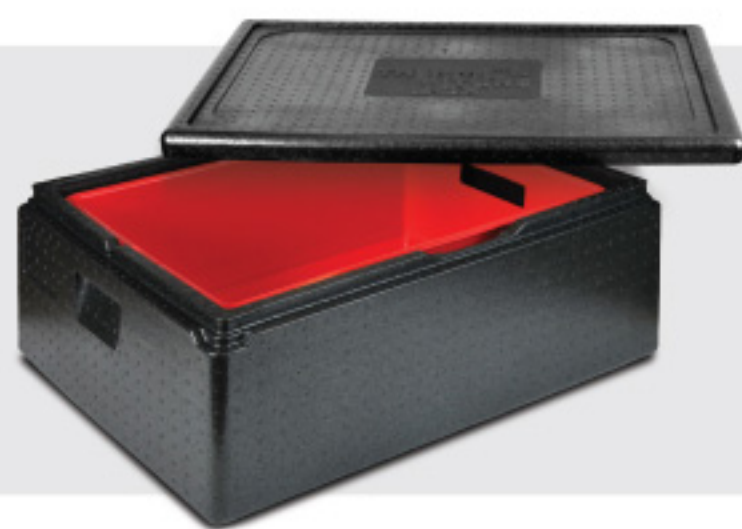
Easy to clean and sterilize  
易於清潔和消毒

### ■ ENVIRONMENT 環境

100% recyclable, can be recycled by a variety of methods  
100%可回收 · 也可通過多種方法回收

Free from propellant gases and other chemical blowing agents  
不含推進劑氣體和其他化學發泡劑

### ■ FREE OF CFC 沒有CFC



**THERMO**  
**FUTURE**  
**BOX®**





## FRONTLOADER

GN

### SOLID AND LIGHTWEIGHT

- > Handy grip edges on all four sides  
四邊均設有把手·方便運輸
- > Hinged door, removable  
可拆式鉸門
- > Door can be swivelled round 270°  
門可向後開啟270°
- > Stackable and lightweight  
輕巧·可疊起
- > Solid one-piece construction  
一體式製造·更耐用

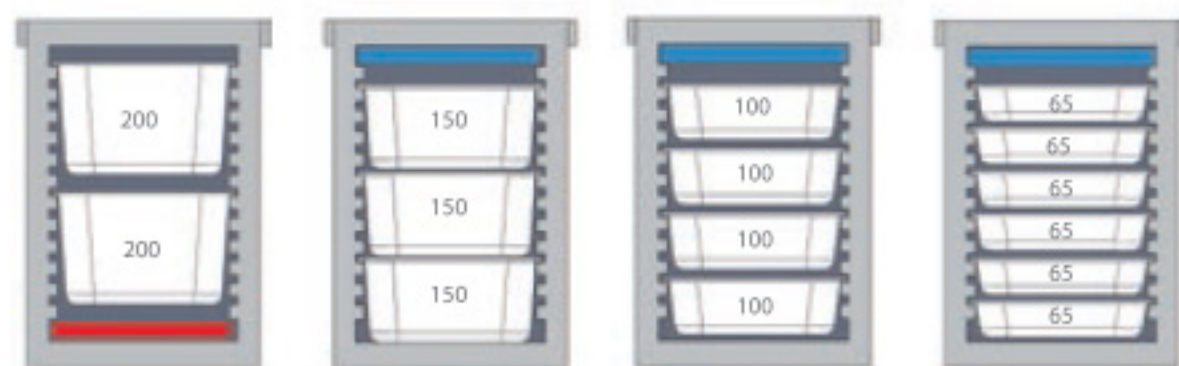


Solid stainless steel fasteners  
堅固的不銹鋼扣



### FRONTLOADER GN 93-12 No.10400

Outerside dimension 外度 : 645 x 445 x 625mm (25.155 x 17.355 x 24.375in)  
Inside dimension 內度 : 530 x 335 x 525mm (20.67 x 13.065 x 20.475in)  
Volume 容量 : 93L  
Guide rails - Distance 內置箱間距離 : 12-32mm



### FRONTLOADER GN 65-8 No.10450

Outerside dimension 外度 : 645 x 445 x 475mm (25.155 x 17.355 x 18.525in)  
Inside dimension 內度 : 530 x 335 x 370mm (20.67 x 13.065 x 14.43in)  
Volume 容量 : 65L  
Guide rails - Distance 內置箱間距離 : 8-32mm



GASTRONORM 

## GN 1/1 Premium

GN Premium - More space and special recessed grips inside make changing of hot or heavy GN-containers easier.  
GN Premium - 提供更大的空間放置物品·GN容器內的特別凹槽可以令您更容易放入及取出加熱後的容器·

GASTRONORM 

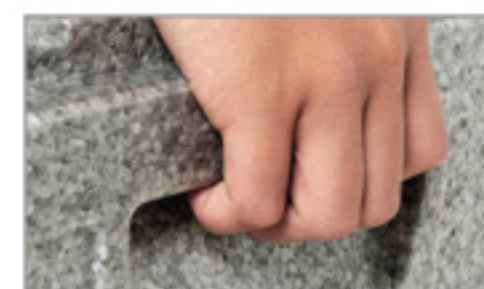
Special space for labels.  
每個箱均設有標籤位置·方便管理·



Easy to open  
易於打開



More space and special grips inside  
較大空間及內置凹槽·方便放入及取出容器



Ergonomic handles  
人體工學手柄



Cooling top and cool pack  
重力箱可以額外加強保冷功能·箱頂及箱內可加入Cool Pack





## GN 1/1 Premium

Item No. 貨號	Outside dimensions (mm) 外度(mm)	Outside dimensions (in) 外度(in)	Inside dimensions (mm) 內度(mm)	Inside dimensions (in) 內度(in)	Volume (L) 容量(L)
10023	600 x 400 x 180	23.4 x 15.6 x 7.02	538 x 337 x 117	20.982 x 13.143 x 4.563	21
10033	600 x 400 x 230	23.4 x 15.6 x 8.97	538 x 337 x 167	20.982 x 13.143 x 6.513	30
10043	600 x 400 x 280	23.4 x 15.6 x 10.92	538 x 337 x 217	20.982 x 13.143 x 8.463	39
10053	600 x 400 x 320	23.4 x 15.6 x 12.48	538 x 337 x 257	20.982 x 13.143 x 10.023	46
10063	600 x 400 x 400	23.4 x 15.6 x 15.6	538 x 337 x 337	20.982 x 13.143 x 13.143	61

GASTRONORM



## PC Food Pan



> Nest well for compact storage space  
互相套疊減少存放空間

> Engraved capacity marking for easy measuring  
盆身有容量刻度

> Dishwasher and freezer safe  
可放入冰箱及洗碗碟機

Temperature range 耐溫: -20°C ~ +130°C

Cover 蓋

Item No. 貨號	Dimensions (mm) 尺寸(mm)	Dimensions (in) 尺寸(in)
287	175 x 107 x 11	6.875 x 4.25 x 0.375
288	175 x 161 x 30	6.875 x 6.375 x 1.125
289	263 x 159 x 30	10.375 x 6.25 x 1.125
290	323 x 174 x 30	12.75 x 6.875 x 1.125
291	323 x 263 x 30	12.75 x 10.375 x 1.125
292	529 x 322 x 30	20.875 x 12.625 x 1.125



Item No. 貨號	Dimensions (mm) 尺寸(mm)	Dimensions (in) 尺寸(in)	Volume (L) 容量(L)
287/2	175 x 107 x 64	6.875 x 4.25 x 2.5	0.54
287/4	175 x 107 x 101	6.875 x 4.25 x 4	0.75
288/2	175 x 160 x 64	6.875 x 6.25 x 2.5	0.82
288/4	175 x 160 x 101	6.875 x 6.25 x 4	1.2
288/6	175 x 160 x 149	6.875 x 6.25 x 5.875	2
289/2	263 x 159 x 64	10.375 x 6.25 x 2.5	1.5
289/4	263 x 159 x 101	10.375 x 6.25 x 4	2.3
289/6	263 x 159 x 149	10.375 x 6.25 x 5.875	3.5
290/2	323 x 174 x 64	12.75 x 6.875 x 2.5	2
290/4	323 x 174 x 101	12.75 x 6.875 x 4	3.4
290/6	323 x 174 x 149	12.75 x 6.875 x 5.875	5
291/2	323 x 263 x 64	12.75 x 10.375 x 2.5	3
291/4	323 x 263 x 101	12.75 x 10.375 x 4	5.2
291/6	323 x 263 x 149	12.75 x 10.375 x 5.875	8
292/2	529 x 322 x 64	20.875 x 12.625 x 2.5	7
292/4	529 x 322 x 101	20.875 x 12.625 x 4	12
292/6	529 x 322 x 149	20.875 x 12.625 x 5.875	18

## BOXER No.10383

Box for best logistical solutions! Optimized packing size (1/4 Euro-pallet), stackable with most common stacking containers (E2-or bakery baskets), suitable for GN size containers.

最佳的物流方案！物流箱讓您在運輸時更省位，一個箱子只佔標準棧板位置。GN Boxer 可以與常見物流箱 (E2或麵包物流箱) 疊起，或與其它GN系列物流箱一同使用。

GASTRONORM



With recessed grips and tight fitting lid  
採用凹入式手把，箱可緊密蓋上

Outerside dimension 外度: 595 x 395 x 290mm  
Inside dimension 內度: 540 x 340 x 230mm  
Volume 容量: 42L



OPTIMIZED FOR STACKING CONTAINERS  
更優質設計令物流箱緊密疊起，運輸過程更安心



## ALL-ROUND 60 x 40

For stacking containers, baking tins or trays 60 x 40cm  
適用於烤盤或容器尺寸為60 x 40cm

ALL-ROUND



## FARM BOX

Transportation and insulation of locally sourced fresh fruit and vegetables or cooled food directly from the farm. Ideal for stacking baskets, E2-crates or subscription boxes.

為新鮮的食材做最好的保護！不管是農場直送的，還是從外地運送的新鮮蔬果或冷藏食品，都可以保持食品新鮮及大大減低運輸所造成的損耗。箱內可加配菜籃、E2箱或紙箱，令運輸過程更安全。

FARM BOX



Item No. 貨號	Outside dimensions (mm) 外度(mm)	Outside dimensions (in) 外度(in)	Inside dimensions (mm) 內度(mm)	Inside dimensions (in) 內度(in)	Volume (L) 容量(L)
12643	685 x 485 x 260	26.715 x 18.915 x 10.14	625 x 425 x 200	24.375 x 16.575 x 7.8	53
12673	685 x 485 x 360	26.715 x 18.915 x 14.04	625 x 425 x 300	24.375 x 16.575 x 11.7	80



Item No. 貨號	Outside dimensions (mm) 外度(mm)	Outside dimensions (in) 外度(in)	Inside dimensions (mm) 內度(mm)	Inside dimensions (in) 內度(in)	Volume (L) 容量(L)
13343	525 x 430 x 300	20.475 x 16.77 x 11.7	465 x 370 x 235	18.135 x 14.43 x 9.165	40
13353	525 x 430 x 345	20.475 x 16.77 x 13.455	465 x 370 x 280	18.135 x 14.43 x 10.92	48
13383	475 x 375 x 347	18.525 x 14.625 x 13.533	415 x 315 x 280	16.185 x 12.285 x 10.92	37

**Perfect combination** 以下情況也可使用：

- > No unpacking of vegetable baskets  
未經包裝蔬菜
- > Extra high for more volume  
較大型蔬菜





No.70382  
With practical carry handle  
設有手把 · 方便拿取



HOT



### HOT PACK

Hot Pack in GN size without electricity.  
尺寸與GN物流箱完全配合 · 無需用電

Ready for use and easy heating in  
容易準備 · 可利用以下方法加熱製熱包

- > oven: max. 30 minutes at 85°C or  
焗爐: 以85°C加熱最多30分鐘
- > bain-marie: max. 35 minutes in boiling water  
隔水蒸爐: 浸在沸水最多35分鐘

Suitable for 適合應用 : GN 1/1  
Outside dimension 外度 : 530 x 325 x 25 mm (20.67 x 12.675 x 1 in)

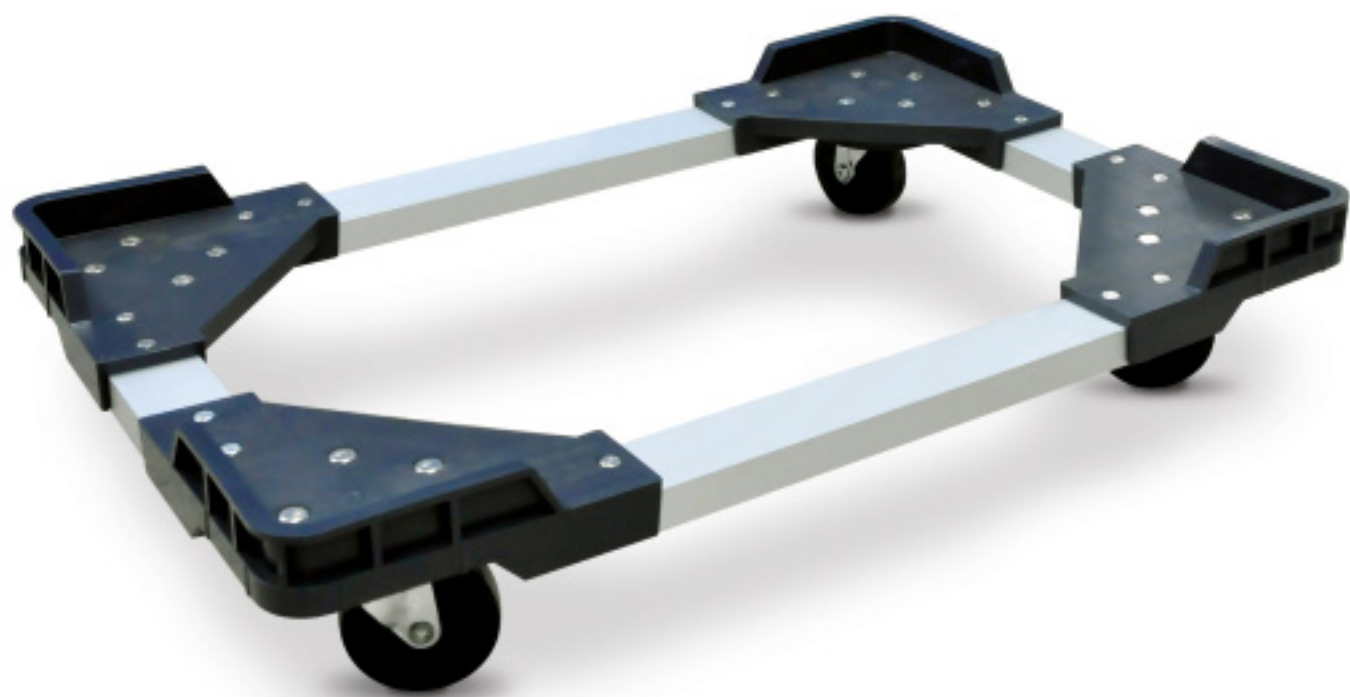
### TROLLEY

Suitable for 適合應用 : GN 1/1

max. load 負重量 : 200kg

4 swivel castors 四個旋轉車輪

Can be customized according to different sizes 可根據不同尺寸訂造



No.10400T  
Outside dimension 外度:  
659 x 438 x 150mm (26 x 17-1/4 x 5-7/8 in)

### COOL PACK PREMIUM

- > Durable quality  
保冷過程更持久
- > Dishwasher safe up to 85°C  
可放入洗碗碟機達85°C熱水清洗
- > Consistent freezing without hollow space  
最佳的持續保冷功能
- > Freezing in horizontal or vertical position  
可以垂直或橫向擺放

- > Small edges (GN 1/1, 1/2) for use on all Frontloader guide rails  
可插入Frontloader凹槽位置 · 更節省箱內空間
- > Convenient carrying handle  
設有手把 · 方便提取
- > Spacers for stacking and freezing  
可疊起及一同使用 · 達至更佳效果

COOL



-12°C  
COLD  
meat, fish

No.70388

Suitable for 適合應用 : GN 1/1  
Outside dimension 外度 : 530 x 325 x 25 mm (20.67 x 12.675 x 1 in)



保冷-12°C · 可用於運送肉類、海鮮